

17th Technical Training Series



April 3-6, 2017 · Long Beach Hyatt
200 South Pine Avenue · Long Beach, California, 90802





WASTE NOT OC COALITION



Feed the Need

Want to donate funds to
Waste Not OC?
Text the word **Orange** to
41444 or [click here](#)



HOME ABOUT US NEWS FOOD RECOVERY IDENTIFYING FOOD INSECURITY FIND THE NEAREST PANTRY GET INVOLVED RESOURCES CONTACT US



What we do

Food Recovery

Identify Food Insecure Individuals

Provide Food Resources

Wastenotoc.org

Mike Learakos
Executive Director

mlearakos@wastenotoc.org

Rachel Otair
Program Manager

rotair@wastenotoc.org

Social Determinants of Health:



The first step toward success is taken when you refuse to be a captive of the environment in which you first find yourself.

Mark Caine



The biggest threat to innovation is internal politics and an **organizational culture**, which doesn't accept failure and/or doesn't accept ideas from outside, and/or cannot change.



Source: July 2016 Gartner Financial Services Innovation Survey, n = 167

#GartnerSYM

Gartner.

“There is nothing new about poverty. What is new is that we now have the techniques and the resources to get rid of poverty. The real question is whether we have the will.”

-Martin Luther King Jr.





Food insecurity exists in every county and congressional district in the country. But not everyone struggling with hunger qualifies for federal nutrition assistance. Learn more about local food insecurity and the food banks in your community by exploring data from Feeding America's annual Map the Meal Gap project.

Food Insecurity in The United States

Change the selections below or simply click on the map to start exploring.

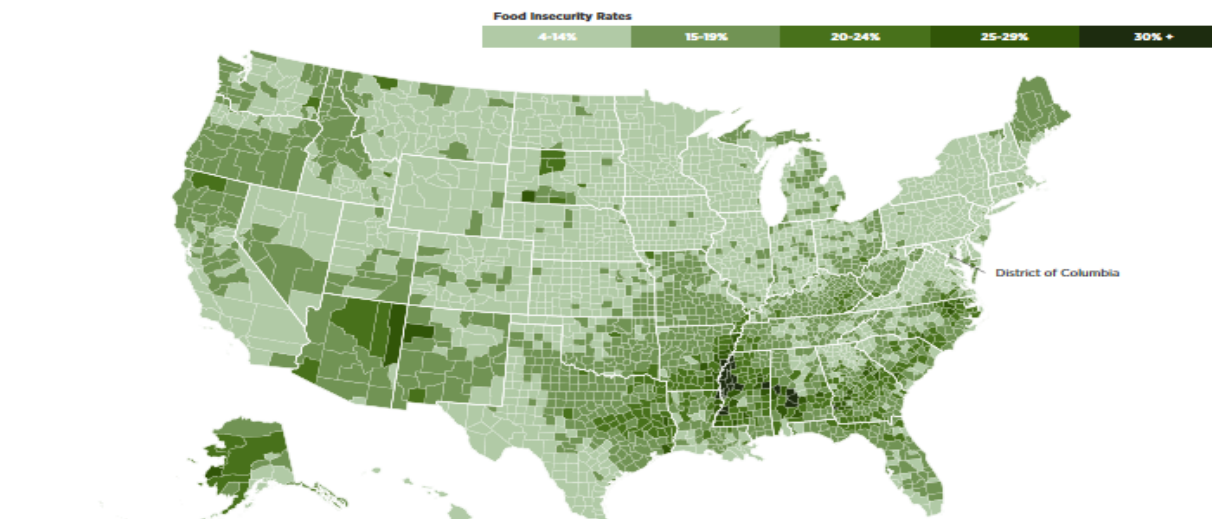
Map Type:

Year:

Demographic:

Location:

Feeding America Map the Meal Gap 2014



County | 2014 | Overall | **The United States** | [f](#) | [t](#) | [e](#)



AVERAGE COST OF A MEAL: \$2.89 **ADDITIONAL MONEY REQUIRED TO MEET FOOD NEEDS: \$24,558,800,000**



Food Insecurity Statistics Orange County

Source: (Feeding America. Map the Meal Gap 2013 and 2014.)

2013

12.7%

349,690 people

2014

10.9%

335,480 people

1 in 5 children face food insecurity

Child Poverty Rates in California Counties

County or County Group	Child Poverty Rate (%)	County or County Group	Child Poverty Rate (%)
Merced	40.6	Colusa, Glenn, Tehama, Trinity	21.7
Fresno	36.4	Shasta	21.7
Tulare	36.3	Yolo	21.3
Lake, Mendocino	35.2	Solano	20.8
Kern	35	San Diego	19.6
Imperial	32.7	San Luis Obispo	19.2
Stanislaus	32.4	Santa Barbara	19
Madera	30.7	Orange	18.4
Del Norte, Lassen, Modoc, Siskiyou,	29	Ventura	16.8
Kings	28.7	Sonoma	16.1
Butte	26,4	Alameda	15.8
Los Angeles	26.3	Contra Costa	15.6
Sutter, Yuba	26	San Francisco	15.4
San Joaquin	25.2	Santa Cruz	14.3
Sacramento	25.2	El Dorado	14.2
Humboldt	24.7	Nevada, Plumas, Sierra	12.7
San Bernardino	24.6	Santa Clara	12.2
Alpine, Amador, Calaveras, Inyo, Mariposa, Mono, Tuolumne	22.6	Marin	10.5
Riverside	22.1	Placer	9.7
Monterey, San Benito	22	San Mateo	8.6
Napa	21.9		

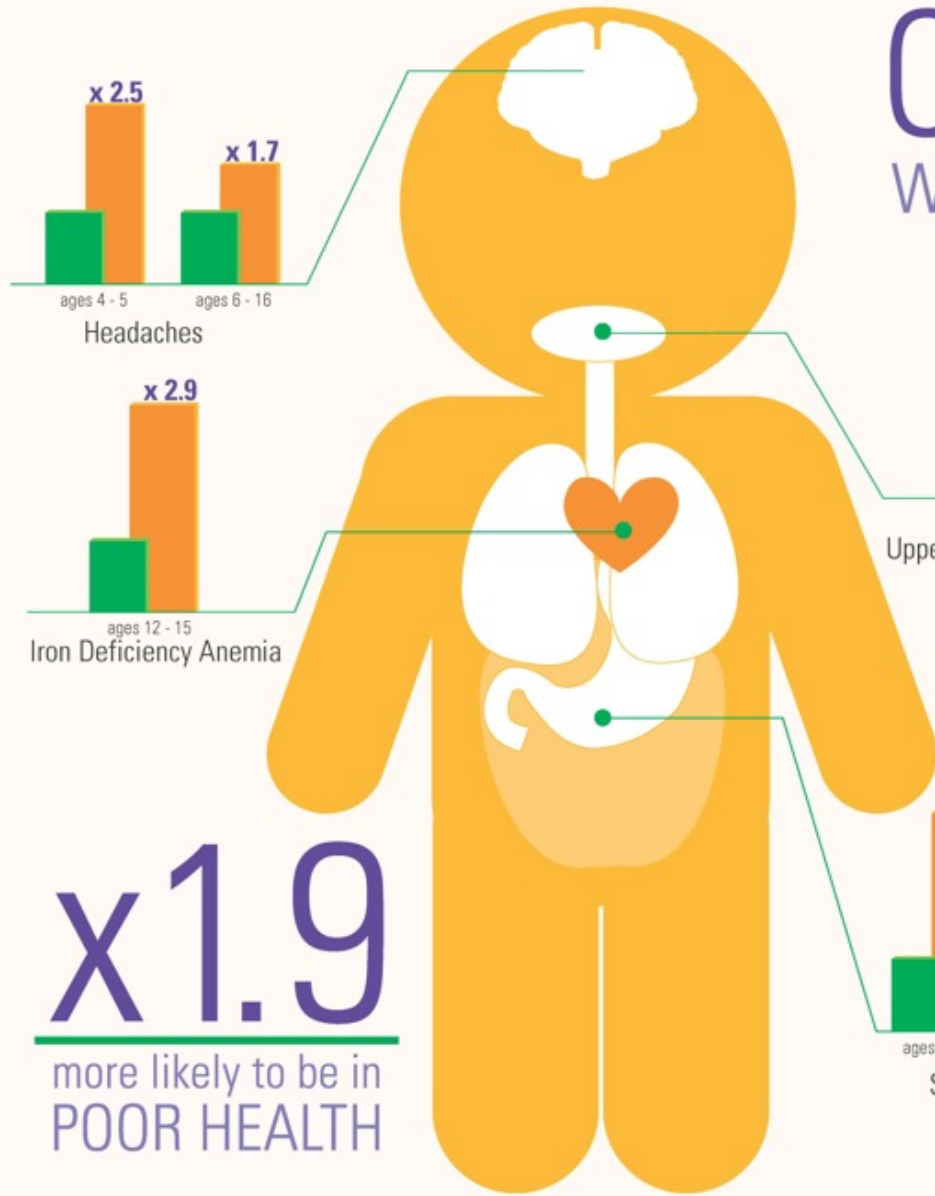
5 CA Counties With More Than 100K Food Insecure Children

State	County (Metro area)	Number of Children Living in Food-insecure Households	Child Food-insecurity Rate
CA	LOS ANGELES	620,090	25.8%
NY	NEW YORK (Five Boroughs, collectively)	420,470	23.7%
TX	HARRIS (HOUSTON)	298,860	26.1%
IL	COOK (CHICAGO)	255,180	20.8%
AZ	MARICOPA (PHOENIX)	248,090	24.6%
TX	DALLAS	175,810	26.8%
CA	SAN DIEGO	163,780	22.6%
CA	ORANGE (ANAHEIM)	156,460	21.2%
CA	RIVERSIDE	155,220	25.1%
CA	SAN BERNARDINO	152,950	25.8%
FL	MIAMI-DADE	141,710	26.0%
TX	BEXAR (SAN ANTONIO)	125,290	27.0%
NV	CLARK (LAS VEGAS)	124,600	25.5%
TX	TARRANT (FORT WORTH)	122,550	24.2%
MI	WAYNE (DETROIT)	102,790	23.3%

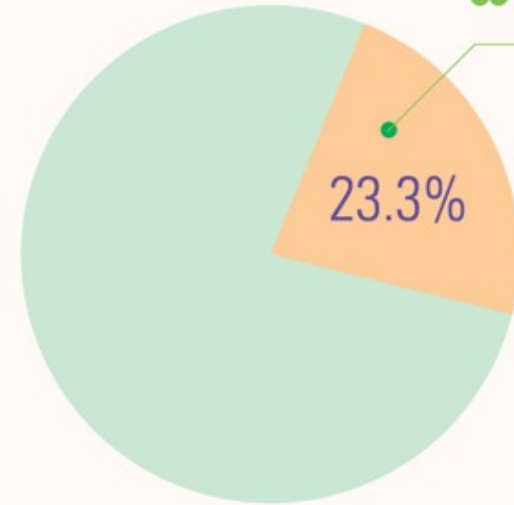


Child Food Insecurity

What health problems does it cause in children?



What is Food Insecurity?
Food Insecurity is defined by the limited availability of nutritionally adequate and safe foods. It also depends on the limited availability to acquire food in a socially acceptable way.



1 in 6
children suffer from
FOOD INSECURITY

Multi-Pronged Approach

Food Recovery

Educate restaurants and grocery stores on the Good Samaritan Act to increase food donations.



Food Distribution

Connect those in need with pantries that provide wholesome food.

Identify Those in Need

Start asking the questions if individuals are facing food insecurity.



California Health and Safety Code Section 101060


The county health officer **may designate** a nonprofit food distribution agency to coordinate and facilitate the donation of food and food products to nonprofit, charitable corporations, from available sources, including restaurants, grocery stores, or food distributors.

The Facts about Food Donations

Fact sheet on donation laws and regulations distributed by Environmental Health Specialists during the food facility inspection

FOOD FACILITY DONATIONS

Food facilities that are should know that:



for a violation occurring after the

- A facility that donates food will be liable for any damage that results from the consumption of the donated food, regardless of compliance with any laws relating to the packaging, labeling, or storage after the donation.

These are legal references from California law that protect you while you donate.

COUNTY OF SAN BERNARDINO
Environmental Health Services
DEPARTMENT OF PUBLIC HEALTH

The Facts to Know When Donating Food
Did you know?

- Any food facility may donate food to a food bank or to another nonprofit charitable organization for distribution to persons free of charge.
- No food facility that donates wholesome food shall be subject to civil or criminal liability or penalty for violation of any laws, regulations, or ordinances.
- A food facility that donates food will not be liable for any damage that results from the consumption of the donated food, regardless of compliance with any laws relating to the packaging, labeling, or storage after the donation.
- A food facility must handle and store the food to be donated in a safe and sanitary manner. Food donated to the less fortunate must be maintained in the same manner as food sold to your customers.

As a food facility donating food, California state law protects you and supports food facilities that do the right thing!

Can you think of any reason not to donate your leftover food now?
We can't.

Visit www.Wastenotoc.org for more information on who needs your help, where you can donate and how you can be a part of ending hunger in Orange County.
Donating food is made easier than you think!

CC HEALTH

RIVERSIDE ENVIRONMENTAL HEALTH

DONATING FOOD

When you donate food to a food bank or to another nonprofit charitable organization for distribution to persons free of charge, you will not be liable for any damage that results from the consumption of the donated food, regardless of compliance with any laws relating to the packaging, labeling, or storage after the donation.

As a food facility donating food, California state law **protects you!**

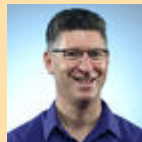
Can you think of any reason not to donate your leftover food now?
We can't.

Click Here for related legal references from the California Health & Safety Code.

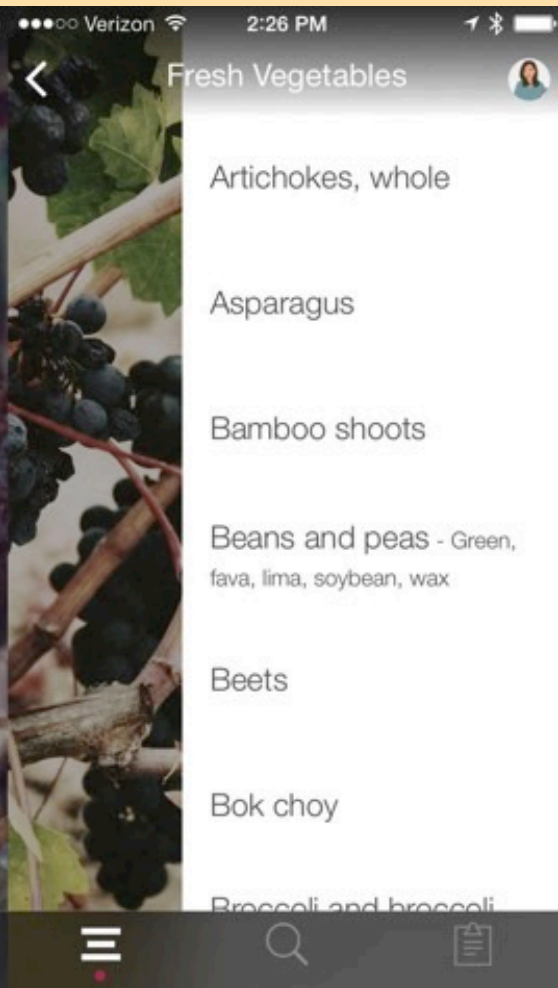
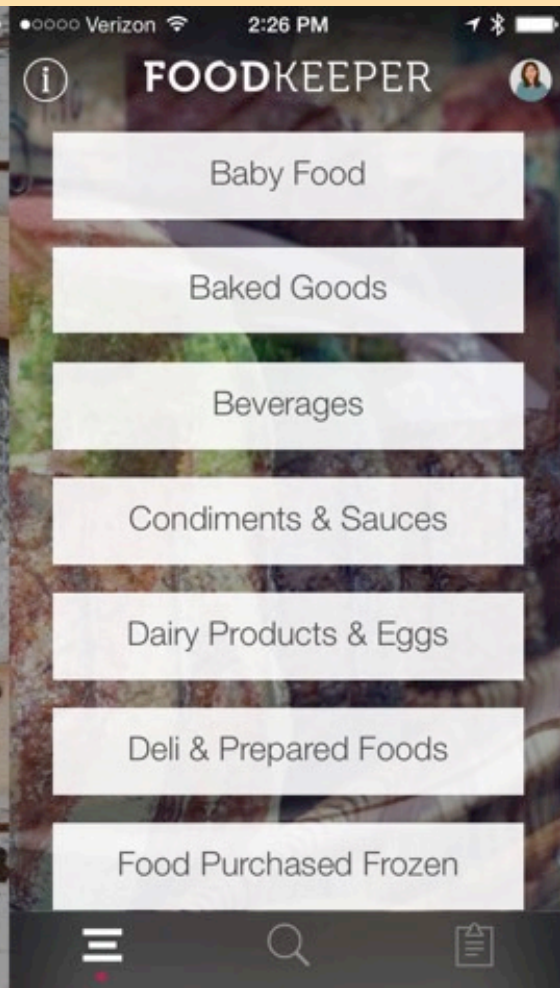


**Los Angeles Times Column:
Orange County program makes donating leftover food easier**

“One of the genius aspects of Waste Not OC is the way it enlists county restaurant inspectors in the effort to reduce food waste. Since they're already interacting with restaurant owners, they're in the best position to educate potential donors.”



**David Lazarus Los Angeles Times Reporter
2016**






2016 Waste Not OC and Coalition Partners Recovered

4,803,980 pounds


4,003,316 meals



AB-1826

- AB-1826 plans to reduce landfill waste by 50% by 2020 by requiring that recoverable waste must be donated, composted, or recycled.
- Other states requiring recycling of organic materials

Connecticut, Massachusetts, Minnesota, Rhode Island, Vermont



SB 1383

In September 2016, Governor Brown signed SB 1383 establishing methane emissions reduction targets in a statewide effort to reduce emissions of short-lived climate pollutants (SLCP).

The law also establishes a target that not less than 20 percent of disposed edible food is recovered for human consumption by 2025.



**WHY DON'T WE ASK
THE QUESTION?**



Screening Tool to Determine Level of Food Insecurity

Within the past 12 months we worried whether our food would run out before we got money to buy more.

Within the past 12 months the food we bought just didn't last and we didn't have money to get more.



The American Academy of Pediatrics' Top Priorities 2015-2016

Addressing the Legal and Mental Health Needs of Undocumented Immigrant Children

AAP Terminate Sponsorship(s) on HealthyChildren.org of Companies that Produce Soft Drinks and Sugar-sweetened Beverages

Use of Telehealth to Extend the Pediatric Medical Home

Screening and Toolkit for Poverty

Marijuana Manufacturer Responsibility in Limiting Exposure to Individuals Under Age 21

Sugar-sweetened Beverage Company Sponsorship of the AAP

7: Universal Screening for Hunger/Food Insecurity During Office Visits

Eliminating Triple-digit Payday and Car Title Loans

Prevent Marijuana Exposure for Children

Executive Director Lodging Expenses at District Meetings



Addressing Food Insecurity: A Toolkit for Pediatricians

- screen patients for food insecurity,
- address the topic in a sensitive manner,
- make the appropriate interventions, most commonly by referring patients and their families to the federal nutrition programs, and
- advocate for greater food security and improved overall health of children and their families.



Addressing Food Insecurity: A Toolkit for Pediatricians

Developed by the American Academy of Pediatrics (AAP) and the Food Research & Action Center (FRAC)

What Health Providers Need to Know

Preparations to Screen

Screening & Documenting

Federal Nutrition Programs

Interventions

Partnership with Agencies, Hospitals and Clinics

Children's Hospital of Orange County
and Family Resource Centers

Over **60,000** Families Screen

St Joseph and St. Jude Hospitals





Partnership with Kaiser

7 Kaiser Permanente hospitals in Orange and Los Angeles counties are now giving unserved meals.

Anaheim, Irvine, Downey, Los Angeles, South Bay, Panorama City and Woodland Hills facilities -

Anaheim School Pilot

Late Night Pick Ups

Anaheim School Pilot August 2016



Waste Not OC Seal

Window seal to honor food donation participants and supporters

All Orange County Yellow Cabs have the seal in their cabins



Interactive Google Pantry Map of Orange County


The image displays a Google Map of Orange County, California, with a popup window providing details for a specific food pantry. The map is populated with numerous yellow shopping basket icons, each accompanied by a red dot, representing the locations of various food pantries across the region. Major highways such as I-5, I-405, SR-91, and SR-57 are clearly visible. The popup window, titled 'St. Vincent de Paul Society - St. Boniface', is centered over a location in Anaheim. The popup text includes the facility name, address (124 N. Resh St North, Anaheim, CA - 92805), phone numbers ((714) 313-9214 or (714) 535-2742), distribution schedule (USDA food distribution 9:00 am - 11:45 am Mon - Fri; soup, sandwiches 5:00 pm - 5:30 pm Tues, Thurs), eligibility criteria (Must live in parish boundaries), languages spoken (English, Spanish), refrigeration capability (Yes), and a website link (http://www.svdpoc.org/parish_services.html). The map interface includes standard Google Maps controls like a compass, a person icon, and zoom in/out buttons. The Google logo is in the bottom left corner, and map data is attributed to ©2015 Google in the bottom right corner.

Facility Name: St. Vincent de Paul Society - St. Boniface
Address: 124 N. Resh St North, Anaheim, CA - 92805
Phone: (714) 313-9214 or (714) 535-2742
Distribution Date/Times: USDA food distribution 9:00 am - 11:45 am Mon - Fri; soup, sandwiches 5:00 pm - 5:30 pm Tues, Thurs
Eligibility: Must live in parish boundaries
Language(s): English, Spanish
Refrigeration Capability: Yes
Website: http://www.svdpoc.org/parish_services.html



Significant Milestones

- **Support from United Way of Orange County: \$50,000/year 2014-2016**
- **211 OC: 24-hour information helpline linking to thousands of local health and human service programs in Orange County, CA. Our google pantry map is merged into their web site**
- **National Recognition: APHA, NACCHO, NACo, NEHA, National Geographic, Food Safety Summit**
- **Jurisdictions interested in WNOC: Los Angeles, San Diego, Long Beach, San Bernardino, Kern, Marin, Alameda, Riverside, Harris County, New Haven, CT**



“This culture of waste has made us insensitive even to the waste and disposal of food, which is even more despicable when all over the world, unfortunately, many individuals and families are suffering from hunger and malnutrition. Once our grandparents were very careful not to throw away any leftover food. Consumerism has led us to become used to an excess and daily waste of food, to which, at times, we are no longer able to give a just value which goes well beyond mere economic parameters. We should all remember, however, that the food we throw away is as if [it were] stolen from the table of the poor, the hungry! I encourage everyone to reflect on the problem of thrown away and wasted food to identify ways and means that, by seriously addressing this issue, are a vehicle of solidarity and sharing with the needy.”

The Don Quixote Principle

So many dreams at first seem impossible. And then they seem improbable. And then when we summon the will, they soon become inevitable.

Christopher Reeve

